

01. SPIRAL WOUND GASKET (SWG)



SHAPES: OBOROUND SQUARE PEAR OVAL DIAMOND ROUND



TYPES:
Basic, Inner Ring, Outer Ring, Outer-Inner Ring.

SIZES:
All sizes available for ANSI, API, JIS, JPI, MSS SP44, DIN Flanges.

MATERIALS:
All kinds of materials from Stainless Steel, Titanium, Nickel Monel, Inconel, Asbestos/Non-Asbestos/PTFE/Dechlorinated Expanded Graphite Paper/Tape, to SPCC materials are available for the HOOP, FILLER, INNER RING, and OUTER RING.

APPLICATION:
To seal Oil, Water, Steam, Air, Gas, and other liquids in flanges, valves, H.E., and other equipment.

EXHAUST PIPE GASKET for Automotive
Manufactured as per customer's request.



NOTE:
-INGE- SWGs are manufactured as per international standards. Please consult our engineers for your special needs.

02. RING JOINT GASKET (RTJ)



TYPES are available in various shapes:
Oval, Octagonal, BX, RX, Flat, and other types as follows



SIZES:
All sizes available to fit ANSI, API, JIS, JPI, MSS SP44, DIN Flanges.

MATERIALS:
A wide selection of materials available from Soft Iron, Soft Steel, Low Carbon Steel, 4-6 Chrome (F5), SS304/304L, 316/316L, 347, 410, Monel, Inconel, Incoloy, Copper, Aluminium, Titanium, to Nickel.

APPLICATION:
In pipe flanges, pressure vessels, valve bonnets, and other equipment where high pressure and temperatures are needed.

NOTE:
Consult our engineers for further specifications.

03. HEAT EXCHANGER GASKET (H.E. GASKET)



SHAPES and TYPES:
Available with Complicated Partition Bars from "H.E. 1 to H.E. 28" (Please refer to our specialized catalog for complete illustration of its shapes).

SIZES: (standard dimensions)
Thickness: 3.0mm, R: 10mm min, W: 7mm min
L: 2.0-3.0mm, L-2: 5mm min, a: 2.0mm min, Metal Thickness: 0.4mm.

MATERIALS:
JACKET materials available from Soft Iron, Low Carbon Steel, Stainless Steel, Copper, Aluminium, Monel, to Titanium. FILLER materials available as per customer's request as to either asbestos or nonasbestos.

APPLICATION:
All kinds of Heat Exchangers.

NOTE:
Other specifications available upon request.



04. FLEXIRING PACKING (PALL RING)



Also called METAL TOWER RANDOM PACKING.

TYPES:
R (Reinforced) and F (Flat).

SIZES:
(standard dimensions).
Diameter and Height: 1/2", 3/8", 1", 1.1/2", 2", 3".
Thickness: 0.3mm, 0.4mm, 0.5mm, 0.6mm, 1mm.

MATERIALS:
Carbon Steel, Stainless Steel (SS-304,316,410), Aluminum Alloys, Titanium.

APPLICATION:
Crude Vacuum and Atmospheric Towers, CO₂ Absorbers, Air Pollution Control Scrubbers, Liquid Extension Columns, Quench Columns, FCC Main Fractionator Absorbers and Strippers, VOC Stripping, Dehumidification, Dehydration, and Desorption, Desorbent and Light Ends Fractionators, Water Treatment Facilities, Chemical Reaction Absorbers and Strippers, Naphta Fractionator.

NOTE:
Other specifications available upon request.



FLAT TYPE

05. TUBE INSERT



Also called:
TUBE PROTECTOR.

SIZES:
(see table).

MATERIALS:
Poly Propylene,
Polyamide 6 or 11 or 12,
PTFE (Teflon),
Nylon, etc.

APPLICATION:
To protect tube ends at the inlet of Condensers and Heat Exchangers against erosion and abrasion to prolong the life of tubes.

NOTE:
Tube Inserts with other materials and dimensions can be manufactured on request.



SIZES

| Tube Sizes | Protector Length | | |
|---------------|------------------|---------------|-------|
| | Nylon | Polypropylene | PTFE |
| 3/8" x 10.000 | 6" | 6" | 4.50" |
| 3/8" x 10.000 | 6" | 6" | 6" |
| 3/4" x 9.000 | 4.50" | 4.50" | 4.50" |
| 3/4" x 9.000 | 6" | 6" | 4.50" |
| 1" x 10.000 | 6" | 6" | 4.50" |
| 1" x 10.000 | 6" | 6" | 4.50" |
| 1" x 10.000 | - | - | 6" |
| 1" x 10.000 | - | - | 4.50" |

06. TUBE PLUG



SIZES:
Available for 3 sizes of tube diameters: 11-14, 12-17, and 15-20. Other sizes available.

MATERIALS:
Brass, SS-316, Alloy R-405,
Alloy 600, Carbon Steel,
Nickel, etc.

APPLICATION:
To plug the leaking tubes at tube ends in Condensers and Heat Exchangers to prolong the use of the equipment.

NOTE:
Special (non standard) Tube Plugs could be manufactured on request.

TABLE OF DIMENSIONS

| A Length | B Max. O.D. Range | C Length | D Diameter | E D. Outside |
|-------------|----------------------|-------------|---------------|-----------------|
| 12 | 11 to 14 | 1.50 | 200 | 200 |
| 12 | 11 to 20 | 1.50 | 371 | 407 |
| 18 | 11 to 14 | 1.50 | 405 | 407 |
| 18 | 15 to 20 | 1.50 | 440 | 500 |
| 24 | 11 to 14 | 1.50 | 500 | 494 |
| 24 | 12 to 17 | 2.00 | 500 | 494 |
| 24 | 15 to 20 | 1.50 | 500 | 500 |
| 30 | 11 to 14 | 1.50 | 400 | 391 |
| 30 | 15 to 20 | 1.50 | 500 | 500 |
| 1 | 11 to 14 | 1.50 | 290 | 300 |
| 1 | 12 to 17 | 2.00 | 290 | 300 |
| 1 | 15 to 20 | 1.50 | 371 | 397 |

Dimensions are in inches, for reference only, and subject to change.

07. CORRUGATED METAL GASKET

**TYPES:**

Filler or Non Filler (solid).
Available in circular and slightly non circular shape.

SIZES: example

as per ANSI, API pipe flanges
T (gasket thickness): 3.0mm min. W (gasket width): 15.0mm min
L (corrugation height) 1.0 +/-0.5mm. P (corrugation pitch): 6.0mm.

MATERIALS:

JACKET: Carbon Steel, Stainless Steel, or others as requested.
FILLER: Asbestos/Nonasbestos materials available.

APPLICATION :

To seal Steam, Water, Hot Water, Hydrocarbon, Lubricants, Organic Solvents, Cryogenic Lines, in Heat Exchangers, Autoclaves, Boilers, etc.

NOTE:

Compliance with specification: API 601 (Double Jacketed Corrugated).



08. ENVELOPE GASKET

**TYPES:****SIZES:**

Available for ANSI, API, JIS, IPL, MSS, SP44, DIN Flanges.

MATERIALS:

ENVELOPE: PTFE (Teflon).
FILLER: Asbestos/Nonasbestos materials available.

APPLICATION:

Strong Acids, Strong Alkalis, Cryogenic Fluid Oxygen, Chlorine Gas, Organic Solvents, in piping systems and equipment lined with glass, rubber or plastic, and glass or porcelain flanges where contamination or coloring not allowed.

NOTE:

Variety of filler materials available. Gasket is made to international standards.

09. FLAT RING GASKET

**TYPES:**

FF (Full Face), RF (Raised Face)

SIZES:

Available for ANSI, API, JIS, DIN, MSS, or other flange standards.
Or may be manufactured according to your specifications.

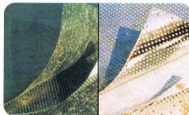
MATERIALS: composite range available

Metal, Nonmetal, Metal-Nonmetal available like: Carbon Steel, Aluminum, Stainless Steel, Bronze, Brass, Asbestos/Nonasbestos Joining Sheets, Graphited, with/without wire reinforcement, Pure Graphite, Rubber, NBR, Teflon/PTFE, etc.

NOTE:

When ordering please specify: Gasket Material/Usage (media/temp./pressure), Flange Standard. For nonstandard items, gasket dimensions/drawing needed. Gasket with O.D. bigger than gasket materials are fabricated with joints. Please consult our technical sales dept. for expert advice and recommendation.

10. STEEL BESTOS & POWER BESTOS



SIZES:

Thickness: 1.2mm, 1.4mm, 1.6mm.
Width: 390mm (and also 500mm for Steel Bestos).
Length: 1.200mm.

MATERIALS:

Beater Sheet and CAF (Compressed Asbestos Fiber).

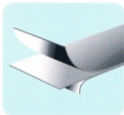
APPLICATION:

Automotive.

NOTE:

Please consult our engineers for your special needs.

11. GRAPHITE LAMINATE



<ING>-Graphite Laminate

is produced by bonding one flexible graphite sheet either to each other or to a central metal insert. The 2-stage adhesive is applied in a tightly controlled process that ensures an adhesive quantity below 1% of graphite and an even adhesive distribution. This method guarantees the preservation of the outstanding properties of flexible graphite.

| AVAILABILITY | GRAPHITE SHEET | HOMOGENEOUS GRAPHITE LAMINATE | METAL-INSERTED GRAPHITE LAMINATE |
|--|-------------------------------|-------------------------------|----------------------------------|
| Thickness | mm inch | 1.0* 1.2* 2.0* 4.0* | 4.00 6.00 0.157 0.236 |
| Graphite Density | g/cm ³ lb/cu ft | 1.12 and 1.44 (max) 0.754 | 1.12 70 |
| Availability | Rolls | Sheet | Rolls, Sheet, Sheet |
| Roll Size: 1 m wide 30.4 m long | | Sheet size: 1000 x 1000 mm | |
| | 10.4 inch 100 ft long | | 39.4 x 39.4 inch |
| OTHER DIMENSION, THICKNESS AND METAL-INSERT ON REQUEST | | | |

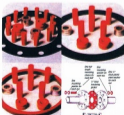
Applications:

- Sealing material for high and low temperatures highly corrosive and aggressive media, high performance engines (e.g. cylinder head and exhaust manifold gaskets), sensitive flanges (stainless, glass, graphite), low flange loads.
- Lining material for protection against hot and low corrosive gases.
- Electrical contact and heat conductive material.

Note:

Other dimension, thickness and metal-inserts on request.

12. FLANGE INSULATION GASKET



TYPES:

E (Full Face), F (Raised Face), D (Ring Groove).

SIZES:

Each set of Flange Insulation Gaskets available for flange sizes from 1" up to 34".

MATERIALS:

For E and F types: 1/8" thick Neoprene Faced Reinforced Phenolic, Plain Reinforced Phenolic or Special CAF. For D type: Reinforced Phenolic only.

APPLICATION:

For flange insulating, designed to assist in combating the effects of corrosion found in flanged pipe systems, by offering precision made components from a range of proven high quality materials, as a long term solution to this problem.

NOTE:

Consult our technical department for size details/complete specifications.

13. SUPER SEAL Expanded PTFE-Joint Sealant



SIZES:

| Width | Thickness Approx. | Length/Lead Approx. | Recommended Flange Size Up to |
|-------|----------------------|------------------------|-------------------------------------|
| 3 | 1.5 | 30 in. | 60 mm |
| 5 | 2 | 30 in. | 100 mm |
| 7 | 2.8 | 15 in. | 500 mm |
| 18 | 3 | 8 in. | 1000 mm |
| 12 | 4 | 5 in. | 1500 mm |
| 17 | 5 | 5 in. | |
| 20 | 7 | 5 in. | >1500 mm |
| 25 | 5 | 5 in. | |

MATERIAL:

100% pure PTFE, Asbestos Free, Tasteless, Odorless.
High Resistance to Harsh Media, Excellent Chemical Stability. Particularly popular in the chemical industries.

APPLICATION:

Corrosive acids, caustics, solvents, gases, molten metal, etc. except molten alkali metals and elementary & gaseous fluorine. Typical applications: Centrifuges, Ceramic Joints, Columns, Compressors, Dryers, Dust Flanges, Evaporators, Filters, Fume Ducts, Gear Boxes, Glass Joints, Heat Exchangers, Manhole Covers, Manways, Mixers, Pipe Flanges, Pump & Valve Casting, Water Systems, etc.

pH: 0-14, Temp.: -240°C + 260°C, Pressure: Up to 100 bar, depending on temperature & installation condition.

14. CARBON MECHANICAL PRODUCTS



TYPES:

Packing Rod Seals; Radial-Target Type A & C, Double-Target Type B & C
Compressor Piston Rings; Straight-Cut, Angle-Cut, Two-Segment, Pressure-Balance Segmental, Rider Rings, Uncut, Angle Cut, Special Angle Cut (Pressure Relieved), Twin-Ring.

SIZES:

Standard and non-standard sizes available.

MATERIALS:

A certain compound of Glass Fibers, Molybdenum, Carbon, Virgin TFE, Bronze, and Graphite.

APPLICATION:

For new and existing reciprocating compressors.

NOTE:

Please consult our engineers to suit your needs.

15. GRAPHITE FOIL



As Universal Adhesive Tape.

TYPES:

INGL 6399; 1/4", INGL 6382; 1/2", INGL 6396; 3/4", INGL 6399; 1".

SIZES:

1/4", 1/2", 3/4", 1".

MATERIALS:

Pure Graphite (99.5%-99.9% Carbon).

APPLICATION:

Excellent sealing in Pumps, Valves, and Flanges at high pressure and temperature (200 to 649°C), and chemical resistant. Non lubricating agents or other additives, non process contaminating.

NOTE:

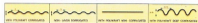
Please consult our engineers for other application or your special needs.

16. ALUMINIUM ROLL JACKETING



TYPES:

Corrugated (narrow/deep), Non-Corrugated, With/Without Polycraft Layer.



SIZES: (standard dimensions)

Narrow Corrugation: Thickness: 0.4mm to 1.6mm, Width: 914mm to 1,220mm, Length: Up to 30,000mm.

Deep Corrugation:

Thickness: 0.4mm to 0.8mm, Width: 839mm, Length: Up to 3,000mm.

MATERIALS:

Aluminium, or Aluminium with Polycraft Paper.

APPLICATION:

Protection over insulation on Tank Farms, Heat Exchangers, LPG Storage Units, Acid Tanks, Food Processing Plants, Sewage/Waste Water Treatment Plants, etc.

NOTE:

Other Sizes and specifications available upon request.

17. ALUMINIUM BANDING STRIP



TYPE:

Strip in coil (up to 700 meters in length).

SIZES: (made to sizes)

Thickness: From 0.2mm up to 3mm (as requested).

Width: From 10mm up to "your request". Length: Up to 700 meters.

MATERIALS:

Aluminium (please consult our engineers for "Alloy and Temper" of Aluminium).

APPLICATION:

For banding or packaging purposes.

NOTE:

Other materials like STAINLESS STEEL available on request.

and **SLITTING SERVICE:** (not cut-to-length)

We also accept slitting work only, from Aluminium, Stainless Steel, Carbon Steel, or other steel products in coils, into strip of different sizes.

18. GLAND PACKING



VARIOUS TYPES of Gland Packings (*Rope, Tape, Cloth, Sheet, Mold, Braided*) with different **sizes** and **materials** for different **application** are available as described below:

Twisted Asbestos Rope/Asbestos Tape/Asbestos Cloth/Cotton Braided Packing/
Asbestos Braided Packing/Graphite Sheet, Mold, Tape Packing/Pure PTFE Fiber
Braided Packing/GFO Fiber Braided Packing/Aramid Fiber Braided Packing/
Carbonized Fiber Braided Packing/Aramid & PTFE Fiber Braided Packing/
GFO & PTFE Fiber Braided Packing/Hatch Cover Packing/Chemical Gasket &
Tape/High Pressure Packing/Super Pure Graphite Packing, etc.

They may also come in combination with following added-up characteristics such
as: Metallic/Laminated/PTFE Impregnated/Inconel or Brass Wire Reinforced/
Heat, Oil, Chemical Resistance/PTFE or GFO Reinforced, etc.

NOTE:

Non asbestos materials available. Please specify your inquiry.

19. CALCIUM SILICATE Blocks & Pipe Covers



TYPES:
Block, Pipe Cover.

SIZES: (in mm)

According to International Standards. Special sizes/thickness available on request.
Block: 900x600, 900x150, 600x150, with Thickness: 25, 40, 50, 65, 75, 90, 100
Pipe Cover: For pipe dia. 1/2" to 36" in two longitudinal sections, with Length: 900, and Thickness: 50 and 75.

MATERIALS:

Hydrated Calcium Silicate reinforced with non-asbestos fiber (4 to 5 times stronger than Fibrous material, and vibration proof, with 25 years maintenance free). Also available with polyurethane material.

APPLICATION: from 800 to 850°C

Boiler, Steam & Process Pipelines, Ducts, Turbines, Fuel Oil Lines & Chimney, Refiner, Gas Cracker, Heater, Blast Furnaces Stoves, Bundle Pipe, Soaking Pits, Furnaces, Shields, Waste Heat Recovery System, Preheater Cyclones, Precooler, Kiln, Firing Hood, Grate-Cooler, Reduction Cells/Pots, Alumina Calciner, Regenerators & Arising Laves, etc., in Power Plants, Fertilizer, Refinery, Petrochemical, Iron & Steel, Sponge Iron, Cement, Aluminium, Ceramic & Glassware, and Industries, Pharma, etc.

20. PTFE (TEFLON) PRODUCTS



OTHER FORMS OF PTFE PRODUCTS:



Tough finished PTFE excellent in chemical and heat resistance with special lubricants



Finished PTFE - Polishing exclusively for Black Cover

Trade Mark: -INLON-

Various types and sizes of PTFE products available for various application.

PTFE products come in either Finished and Semi-Finished Products.

Finished Products are for equipment parts such as Valve Seats, Gasket, Bearings, Seals, O-Rings, etc. Semi-Finished Products are such as Teflon Sheets, Blocks, Rods, Pipes, Coating, etc.

ADVANTAGES:

Thermal stability, non-friction and non-stick properties, chemical and electrical resistance, sliding and wear properties, maximum service temperature up to 260°C.

NOTE:

Custom-made special size may be ordered in virgin PTFE and various filled compositions.

21. ROCKWOOL



TYPES: Blanket, LD & HD, Felt, LD & HD, Pipe Cover & Lamella Mats.

SIZES: (all standard sizes available)

| Type: | Width: | Length: | Thickness: |
|--------------------|-------------|---------|--------------------------|
| -Blanket: LD | 1.0m | 5.0m | 25mm |
| LD | 1.0m | 3.3m | 75mm |
| HD | 1.0m | 10.0m | 25mm |
| -Felt, LD/HD | 0.5m | 1.0m | 25, 50, 75, 100mm |
| -Pipe cover, dia | 1/8" to 12" | 1.0m | 25, 30, 40, 50, 65, 75mm |
| -Lamella Mats, dia | 14" (+) | 1.0m | 25, 30, 40, 50, 65, 75mm |

MATERIALS: Rockwool laminated with Wiremesh/Aluminium Foil/Kraft Paper

APPLICATION:

For industrial heat/refrigeration insulation, such as in valves, joints, big pipes, storage tanks, boilers, heaters, chillers, flame-proof windows, turbines, metal structures, piping, and other heating/refrigeration/air conditioning equipment.

NOTE:

Please refer to our specialized catalog for exact sizes and technical details.

22. RUBBER/NEOPRENE SHEET



TYPES:

Rubber Sheet, Rubber Sheet Insert, Neoprene Sheet, Neoprene Sheet Insert.

SIZES: (standard per coil)

Width: As required with max. 1.2 meter (48")

Thickness: 1.6 (3/16"), 3.2 (1/8"), 4.8 (3/16"), 6.4 (1/4"), 8.0 (5/16"), 9.5 (3/8"), 12.8 (1/2"), 16.0 (5/8"), 19.0 (3/4"), 25.4 (1").

MATERIALS:

Natural Rubber or Natural Rubber with Fabric/Nylon Insert, and Neoprene or Neoprene with Fabric/Nylon Insert.

APPLICATION:

As general packing/gasketing/sealing for gases/liquid/solid media, including oil and ozone. Amino acid, and oil heat/abrasive resistant.

NOTE:

Please consult our engineers for optimum choice according to its types and grades.

23. EXPANSION JOINT



Trade Mark:
<INGE-FB>

TYPES:

Flair Square,

Flair Round,

Belt Type



SIZES:

Manufactured as per requirement.

MATERIALS:

For non-metallic expansion joints, layers of Glass Fiber Cloth and PTFE are standard materials. Additional layers as thermal insulation will be added depending on requirements.

APPLICATION:

Air Conditioners, Deodorizers, Gas Outlets, Desulfurization and Denitration Equipment, in the Power Plants, Oil Refineries, Steel Plants, Incinerator Plants for waste treatment, Exhaust Gas Treatment Plants.

NOTE:

Above products are made available in cooperation with FB Industrial Co. Ltd. Japan.

24. SEALING TECHNOLOGY PRODUCTS



A wide range of sealing items

in kinds, types, styles, sizes, materials, grades, application, etc.

is on the selection

Please contact us for your
SEALING INQUIRIES
and let's show you
OUR SOLUTION
to your sealing problems

<Kingi-GENERAL>

Standards: ASTM F104-71-SAE J390.2/F112700.



Color: Black

- ◆ DIMENSION : Sheet Size : 1.5x2meter
Thickness : 0.3 to 3mm
- ◆ RECOMMENDED : Temperature : 350°C/662°F
- SERVICE : Pressure : 350 psi (24 bar)
Media : Steam, Gases, Water, and Other
Non-Aggressive Media.

<Kingi-200>

Standards: BS2813B, B290/DIN1734, AMND088673, ASTM D1170-62E, ASTM F104-71, P1414.



Color: Red

- ◆ DIMENSION : Sheet Size : 1.5x2meter
Thickness : 0.3 to 3mm
- ◆ RECOMMENDED : Temperature : 400°C/752°F
- SERVICE : Pressure : 600 psi (41 bar)
Media : Steam, Gases, Water, and Other
Non-Aggressive Media.

<Kingi-100>

Standards: BS2813A, BS1892, D1170, D1161A, F184-F112751, DIN3754, EN400.



Color: Black

- ◆ DIMENSION : Sheet Size : 1.5x2meter
Thickness : 0.3 to 3mm
- ◆ RECOMMENDED : Temperature : 510°C/951°F
- SERVICE : Pressure : 1,900 psi (131 bar)
Media : Steam, Gases, Water, and Other
Non-Aggressive Media.

<Kingi-Oilet>

Standards: BS2813A, BS1892, B02903754, DIN3753, ASTM D1170-62E, ASTM F104-71, P1414.



Color: Black

- ◆ DIMENSION : Sheet Size : 1.5x2meter
Thickness : 0.3 to 3mm
- ◆ RECOMMENDED : Temperature : 500°C/932°F
- SERVICE : Pressure : 1,900 psi (131 bar)
Media : Petrol, Oils of all types incl. Chlorinated
Hydrocarbons and Aromatic.

<Kingi-UNIVERSAL>

Standards: BS2813, BS F125, BS1892, NC/DIN3734, ASTM F184-71, ASTM D1170-627 P1414.



Color: Blue

- ◆ DIMENSION : Sheet Size : 1.5x2meter
Thickness : 0.3 to 3mm
- ◆ RECOMMENDED : Temperature : 550°C/1022°F
- SERVICE : Pressure : 2,000 psi (138 bar)
Media : Extreme Pressures, virtually all media
incl. Hydrocarbons, Alkalis, medium strength Acids.

<Kingi-1000>

Standards: BS2813A

WIRE INSERT REINFORCEMENT



Color: Black (Graphited)

- ◆ DIMENSION : Sheet Size : 1.5x2meter
Thickness : 0.8 to 3mm
- ◆ RECOMMENDED : Temperature : 550°C/1022°F
- SERVICE : Pressure : 2,900 psi (200 bar)
Media : For Extreme Pulsating Pressure, and
High Temperatures.

<Kingi-Acid>

Standards: BS/DIN3734, DIN3252, NF T48.0091-Cat.E



Color: White

- ◆ DIMENSION : Sheet Size : 1.5x2meter
Thickness : 0.3 to 3mm
- ◆ RECOMMENDED : Temperature : 150°C/302°F
- SERVICE : Pressure : 150 psi (10 bar)
Media : For Strong Organic and Inorganic Acids.

<KINGI SIL>

K-4430



Standards: International Standards of Manufacturing Process & Testing Procedure

- ◆ **DIMENSION** : Sheet Size : 1.5x2meter
Thickness : 0.4 to 5mm
- ◆ **RECOMMENDED SERVICE** : Max. Temp. : 430°C/806°F (liquid temperature)
Max. Pressure : 100 bar (1450 psi)
Media : Air, Water, Saturated Steam (250°C/482F), Oils, Fuels, and Gases.
- ◆ **Excellent Chemical Resistance**
- ◆ **3XA Anti-Stick Finish** on both sides to ease flange separation.

<KINGI SIL>

K-4400



Standards: International Standards of Manufacturing Process & Testing Procedure

- ◆ **DIMENSION** : Sheet Size : 1.5x2meter
Thickness : 0.4 to 5mm
- ◆ **RECOMMENDED SERVICE** : Max. Temp. : 400°C/752°F
Max. Pressure : 100 bar (1450 psi)
Media : Water, Gases, Hydrocarbon Alkalis, and medium strength Acids.
- ◆ **Outstanding Creep Resistance** at high temperatures and high loads & max. safety
- ◆ **3XA Anti-Stick Finish** on both sides to ease flange separation.

<KINGI SIL>

K-4408W



Standards: International Standards of Manufacturing Process & Testing Procedure

- ◆ **DIMENSION** : Sheet Size : 1.5x2meter
Thickness : 0.4 to 5mm
- ◆ **RECOMMENDED SERVICE** : Max. Temp. : 400°C/752°F
Max. Pressure : 100 bar (1450 psi)
Media : Water, Gases, Hydrocarbon Alkalis, and medium strength Acids.
- ◆ **"Wire Reinforced"** formulated for pulsating pressure applications
- ◆ **3XA Anti-Stick Finish** on both sides to ease flange separation.

<KINGI SIL>

K-4210



Standards: International Standards of Manufacturing Process & Testing Procedure

- ◆ **DIMENSION** : Sheet Size : 1.5x2meter
Thickness : 0.4 to 5mm
- ◆ **RECOMMENDED SERVICE** : Max. Temp. : 350°C/662°F
Max. Pressure : 60 bar (870 psi)
Media : Oils, Steam, Water, and Gases
- ◆ **Good Alternative for traditional CAF jointing sheet.**
- ◆ **3XA Anti-Stick Finish** on both sides to ease flange separation.

APPLICATION of jointing sheets:

Piping, Pipe Flanges and Valve Bonnets in Thermal or Nuclear Power Plants, Refineries, Chemical Plants, Steel Plants, and Vessels. Covers and Joints in Towers, Tanks, Boilers, Pressure Vessels, and Heat Exchangers, Furnaces, and other various types of industrial machinery like in pumps, internal combustion engines, gasoline/diesel engines, compressors, etc.

NOTE:

Above information should be used as guidance only. Actual serviceable limits depend upon the relationship between temperatures, pressures, media to be sealed, flange and assembly conditions, etc.

Please refer to our specialized brochures for detailed characteristics of each type of above jointing sheets and consult our technical department for expert advice & recommendations of your specific application.